

We train on *your* schedule.

Visible Edge Institute has been providing classroom training for over 30 years and remote training for over a decade. Our flexible, comprehensive training programs are designed to accommodate individuals of **all** skill levels.

As a Licensed Post-Secondary Educational Institution, our training provides students with hands-on experience, in-depth skills in leading applications, and industry-recognized certifications. You'll get the opportunity to earn industry-recognized certifications in all of our programs.

Train remotely or in-center, while maintaining on-demand access to our live instructors. Students can also access training lessons 24/7 for self-study.

Remote Attendance: Remotely tap into our training center to work directly with live instructors on-demand via phone, video call, screen sharing, email, chat or text.

In-Center Attendance: Choose to attend training in our physical training center on your schedule, not ours. Our renovated in-center learning environment utilizes state of the art equipment and modern learning techniques including one-on-one live instructor interactions, digital materials, labs, and project work.



You may qualify to have your entire program paid for, 100%, with no out-of-pocket costs to you. All programs are federally approved by WIOA, Section 30, Trade Adjustment Act, Vocational Rehab, and more.

We are a Veteran Friendly Institution.



GI Bill® is a registered trademark of the U.S. Department of Veterans Affairs (VA). For more information about education benefits offered by the VA, visit the official U.S. government website at <http://www.benefits.va.gov/gibill>.

GLOBAL HEADQUARTERS

Visible Edge, Inc.
38 Technology Way
The Millyard Technology Park
Nashua, New Hampshire 03060

CONTACT US



(888)-VIS-EDGE
(888)-847-3343



info@visible-edge.com



www.facebook.com/VisibleEdgeInc



www.twitter.com/VisibleEdge



www.linkedin.com/company/visible-edge/



www.visible-edge.com
www.visible-edge.com/career-centers/

Ve-I reserves the right to change fees, courses, topics, policies, programs, services and personnel as required. "On-Demand" refers to instructor and facility access during our normal business hours, which are Monday - Friday from 8:00AM to 5:00PM except Federal Holidays and shutdowns. Instructor support is limited to purchased training materials and labs. Remote setup assistance is included.

MECHANICAL & ARCHITECTURAL PROGRAMS

VISIBLE EDGE INSTITUTE

CERTIFICATE PROGRAMS





Mechanical Design Applications Specialist

Become a proficient 3D Parametric Solid Modeler & Detailer using industry-standard 3D Mechanical Computer-Aided Design tools.

Learn to create 3D models and produce technically accurate drawings of electro/mechanical parts, mechanisms, and assemblies - all while exploring industry-standard drafting & modeling practices. Master key skills and tools used by major discreet manufacturers and product development companies.

Creo Mechanical Design Applications Specialist

Core curriculum for this program includes an introduction to Creo, drawing & detailing, sheet metal, CAD drills, and 2D drawing. Also choose to explore surfacing, milling, model-based definition (MBD), advanced modeling, advanced assembly, cable & harnesses, mechanism design & simulation, and more.

Inventor Mechanical Design Applications Specialist

Core curriculum for this program covers topics including new user essentials, sheet metal design, plastic part design, tube & pipe design, cable & harness design, frame generator, simulation FEA, and weldments. Also choose to explore the crucial pieces of simulation kinematic and iLogic.

SolidWorks Mechanical Design Applications Specialist

Core curriculum for this program includes an introduction to SolidWorks, drawings, surfacing, parts & assemblies, sheet metal & weldments, advanced part modeling, and advanced assembly. Also choose to explore simulation, visualization, animation, efficient modeling, design intent, plastics, molds, manufacturing, electrical & routing, APIs, and more.

To learn more about these programs, please visit:

<https://www.visible-edge.com/mechanical-design-applications-specialist>



Revit Architectural Design Applications Specialist

Create 3D models and produce technically accurate drawings of impressive architectural structures while simultaneously learning industry-wide drafting and modeling practices.

Core curriculum and electives for this program include an introduction to architecture, detailing, worksharing, users, Revit, and BIM. Also choose to learn advanced modeling techniques, schedules, industrialized construction, area calculations, Revit families, and how to build features such as stairs, curtains, walls, and roofs.

To learn more about this program, please visit:

<https://www.visible-edge.com/revit-architectural-design-applications-specialist>



Mechanical Design Technologies

Train to become an entry-level Mechanical Designer without any prior experience in Mechanical Design or related disciplines.

If you have an interest in how things work, or how to make them work even *better*, then this program is for you. Our program is for individuals with little to no formal training in Mechanical Design. If you are already a draftsman or CAD operator, then this program can be tailored to your individual skillset in order to transition you into a full design role.

Core curriculum and electives for this program include an introduction to SolidWorks, as well as a focus on mechanical design, product development, manufacturing processes, mechanical systems, machine design, additive manufacturing (3D printing), physics, engineering drawing & graphics, and Design for Manufacturing (DfM).

To learn more about this program, please visit:

<https://www.visible-edge.com/mechanical-design-technologies>



Mechanical Engineering Review

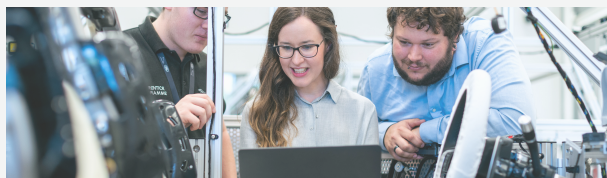
Take your current engineering knowledge to the next level by refreshing your skills and getting back into an engineering or engineering management role.

Today's small to medium size companies are actively looking for Engineering Managers that have a comprehensive skillset to also participate in engineering new products or improve existing products.

Core curriculum and electives for this program will review various areas of the engineering industry - from algebra essentials to trigonometry, calculus, engineering mechanics, statics & dynamics, strength of materials, and thermodynamics. Also choose to explore materials science, geometry, fluid mechanics, system dynamics, differential equations, and heat transfer.

To learn more about this program, please visit:

<https://www.visible-edge.com/mechanical-engineering-review>



Mechanical Engineering Technologies

Prepare for an entry-level position as Associate Mechanical Engineer.

Our Mechanical Engineering Technologies program is designed for individuals with minimal formal training in the Mechanical Engineering industry. If you are already a draftsman, CAD operator, or Mechanical Designer, then this program is perfect to transition you into an associate engineering role.

Core curriculum and electives for this program include an introduction to mechanical engineering, engineering mechanics, fluid mechanics, system dynamics, mechanical systems, machine design, materials science, manufacturing processes & sciences, advanced part modeling, product development, physics, math, algebra, geometry, trigonometry, precalculus, calculus, thermodynamics, probability, statistics, engineering drawing & graphics, strength of materials, heat transfer, electrical engineering, CFD, FEA, SolidWorks, Mathematica, and MATLAB.

To learn more about this program, please visit:

<https://www.visible-edge.com/mechanical-engineering-technologies>



THROUGHOUT THESE PROGRAMS, YOU'LL HAVE THE OPPORTUNITY TO EARN INDUSTRY-RECOGNIZED CERTIFICATIONS, INCLUDING BUT NOT LIMITED TO:



Creo Parametric Fundamentals



Creo Parametric Professional



Revit Architecture Certified Professional



LEED Certification



Certified SolidWorks Associate (CSWA). Professional (CSWP). and Expert (CSWE)



Certified Manufacturing Associate (CMfgA), Technologist (CMfgT), and Expert (CMfgE)