

## How will this help ME???

*"I am planning on attending college and want to study engineering."*

You have decided you are going on to college and you want to study engineering. Congratulations! Our Jump Start Program is the perfect program to give you an engineering advantage when you begin your journey. We teach skills you will need in college! Extend your HS curriculum with courses in either SolidWorks or PTC Creo. In addition, you will receive advanced courses using Mathcad, giving you an added benefit on your first day.

*"I have to work part time to pay for school. Can I still take classes?"*

Students can attend part time around their work schedules. Our Performance Learning Center (PLC) is open from 8:00AM to 5:00PM. Student have flexible access during these hours based on their schedule. The center is staffed by at least one certified instructor who is also a degreed engineer. Materials and lectures are also available after hours for self-study. Please ask for details. Students can also work remotely and access live instructors on demand.

Ve-I is State of MA Section 30 & TAA Approved  
Program is WIOA/Section 30/Trade Act Eligible  
Ve-I is a Licensed Post-Secondary Education Institution

*We are a Veteran Friendly Institution*



"GI Bill® is a registered trademark of the U.S. Department of Veterans Affairs (VA). More information about education benefits offered by the VA is available at the official U.S. government website at <http://www.benefits.va.gov/gibill>."

*Classes can be taken individually*

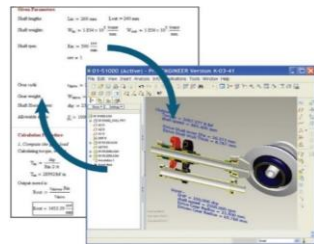
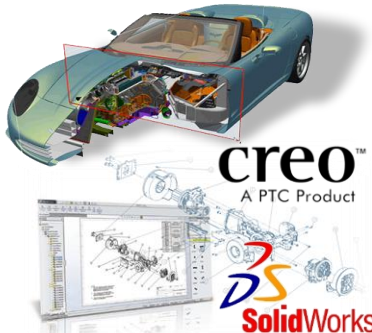
Pricing is subject to revision at any time. Ve-I reserves the right to change fees, courses, topics, policies, programs, services and personnel as required. "Unlimited" refers to instructor and facility access during our normal business hours, which are Monday – Friday from 8:00AM to 5:00PM except Federal Holidays and shutdowns. Most course material can be accessed 24/7 for afterhours study. Instructor support is limited to purchased training materials and labs. Remote students must have access to legal CAD Licenses and required modules for the training. A Student Edition may be supplied for an additional fee. Remote setup assistance is included.

# Engineering Applications Jump Start Program

*(High School & Recent HS Graduates Only)*

Are you a high school student or recent high school graduate who has a passion for technology? Do you want to build and create your own inventions? If you want to work upon graduation, consider a career in detail drafting and 3D modeling. We can teach you the skills you need to enter the job market through our career school. Training can be done in-center, remotely or a combination of both.

Thinking of going to college but not sure the technology field is for you? Try this before spending a small fortune on a college degree program. If you choose to move forward with college, the skills learned here will be used throughout your journey.



Visible Edge, Inc.  
38 Technology Way  
The Millyard Technology Park  
Nashua, New Hampshire 03060  
Telephone: (603) 595-1422  
Email: [Ve-I@visible-edge.com](mailto:Ve-I@visible-edge.com)  
Website: [www.visible-edge.com](http://www.visible-edge.com)

Please visit our website for more program details:  
<https://www.visible-edge.com/education-programs/>  
& <https://www.visible-edge.com/skills-optimization/>

## Visible Edge Institute



## About the Program

*This program prepares future engineering students to be proficient 3D Parametric Solid Modelers using an industry standard 3D Mechanical Computer Aided Design (MCAD) tool.*

*Students will learn to create 3D models and produce drawings of mechanical parts, mechanisms and assemblies while learning standard drafting & modeling practices. Students will utilize their choice of SolidWorks or Creo (Formerly Pro/Engineer).*

## Program Courses

### SolidWorks Classes

*SolidWorks I - Introduction*

*SolidWorks II - Advanced*

*SolidWorks Drawings*

*or*

### Creo Classes (formerly Pro/ENGINEER)

*Introduction to Creo - Fundamentals*

*Introduction to Creo - Productivity Tools*

*Detailing\* & Creating 3-D Drawings*

*Flexible Modeling*

*+*

### Mathcad Prime Classes

*Application Orientation*

*Symbolics and Solving*

*Integration with Creo Parametric*

*Programming Mathematical Expressions*

*Design of Experiments Using Mathcad Prime*

## Program Highlights

*30+ Years of 3D CAD Services*

*3 Week Program*

*Flexible Schedule*

*Live, Degreed Instructors*

*Employable Skills for internships*

*CORE tools for students*

*Apply tuition to full Ve-I Certificate Program*

*Short & Long term investment*