

# Visible Edge, Inc.

Staff | Educate | Support



## Company History

Founded in 1989, we provide a full suite of products and services to product development companies and discreet manufacturers ranging in size from individuals to Fortune 100 corporations and their outsourcing vendors. We are owned and operated by degreed engineers with 25+ years experience installing, managing and working in technical environments.

## Resource and Staffing Services

Visible Edge provides resources and full staffing services to the technical community. We work with individuals looking for new career opportunities by providing job specific training through our licensed career school giving us first-hand knowledge of our candidates' technical, problem solving and people skills. The result is, we provide highly qualified candidates, shortening your recruiting time. Our **Flexible delivery options and unique benefits** are designed to meet the needs of your company's individual staffing requirements.

## Education and Training Services

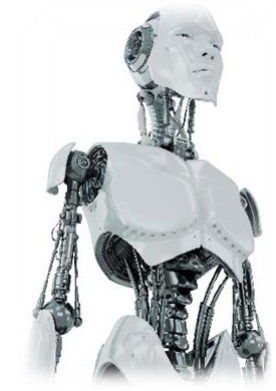
We are a licensed Post-Secondary Education Institution (career school). Our certified instructors have practical, current industry knowledge in the subjects they teach. This ensures that our students are learning employable skills. Our **superior flexible learning options** are unsurpassed in the industry.

## Technology and Integration Services

Visible Edge also offers sales and support for a full suite of technical products used by our customers. We offer basic to advanced CAD, CAE, CFD, FEA, Photorealistic Rendering and Animation, PDM & PLM solutions. In addition we fully support these products with training, implementation and upgrade services to provide **flexible turnkey solutions**.



**Resource and Staffing Services**



**Education and Training Services**



**Technology and Worldwide Integration Services**

Visible Edge, Inc.  
38 Technology Way  
The Millyard Technology Park  
Nashua, New Hampshire 03060  
Telephone: (603) 595-1422  
Fax: (603) 595-5677  
Email: [sales@visible-edge.com](mailto:sales@visible-edge.com)  
Website: [www.visible-edge.com](http://www.visible-edge.com)

Since 1989

## Resource & Staffing Services

### Resources On-Demand

#### Benefits

- No Placement Fees for Ve-I Students
- 2-Week Guarantee on Temp Labor
- Short & Long Term Resource Pool
- Direct Fee Payment Schedules
- Direct Hire Fee Protection
- Drug Free Workplace
- Background Checks
- Skills Assessments

#### Flexible Staffing Delivery

- Indirect (contract) Labor
  - On-Site & Off-Site
- Student Interns
- Direct Labor
  - Direct Hire
  - Temp to Direct
- Outsourced Projects

#### Staffing Resources

- Consultants
- IT Resources
- Student Interns
- Manufacturing Support
- Project & Program Managers
- Engineers, Designers & Detailers
- Workstations & Software Options

#### Market Segments

- Aerospace & Defense
- Consumer Products
- Power Generation
- Capital Equipment
- Industrial Piping
- Medical Devices
- Semiconductor
- Robotics
- Furnaces
- + More...

## Education & Training Services

### Instruction On-Demand

#### Certificate Programs

- Mechanical Design Applications
- Industrial Animation & Rendering
- PLM Support Specialist
- Project Management + More...

#### Individual Courses & Memberships

- Creo
- Inventor
- KeyShot
- Onshape
- AutoCAD
- SolidWorks
- ACAD Electrical
- Mathcad Prime
- Pro/ENGINEER
- PDM Essentials
- Windchill PLM

#### Course Delivery Methods

- Live Instructors
- On-Site, In-Center & Remote Training

**Start anytime with  
Ve-I On-Demand**

Ve-I is a NH Licensed Career School  
Ve-I is State of MA Section 30 & TAA Approved  
Programs are WIOA/Section 30/ Trade Act Eligible

#### We are a Veteran Friendly Institution



"GI Bill® is a registered trademark of the U.S. Department of Veterans Affairs (VA).  
More information about education benefits offered by the VA is available at the  
official U.S. government website at <http://www.benefits.va.gov/gibill>."



**Visible Edge Institute**

## Technology & Worldwide Integration

### Technology On-Demand

#### Software

Award-winning Suite of Product Design, PLM & CAE Applications

- Creo
- KeyShot
- Onshape
- Arbortext
- Pro/ENGINEER
- PDM Essentials
- Windchill PLM
- Mathcad Prime
- Creo Simulate
- Moldex3D
- NCSIMUL
- Flo/EFD

#### Services

Implementations, Migrations, Upgrades, Support & Design Automation

- FEA
- CFD
- Creo
- SolidWorks
- Pro/ENGINEER
- Windchill PDMLink
- Windchill ProjectLink
- Pro/INTRALINK
- PDM Essentials
- Other PDM/PLM
- Virtualization

#### Hardware

3D Printers, Computers, Virtualization & Other Peripherals

- Dell
- VMware
- MarkForg3D
- Stratasys 3D
- 3dconnexion
- + More...