

## Instruction On-Demand

Our certified instructors have practical, current industry knowledge in the subjects they teach. This ensures that our students will learn employable skills for today's economy. Our flexible learning options are unsurpassed in the industry.

### Certificate Programs

Mechanical Design Applications  
Industrial Animation & Rendering  
PLM Support Specialist  
Project Management

### Individual Courses & Memberships

In addition to full Certificate Programs any of the courses listed in the programs can be taken individually or in "groups" via a Training Membership Program. Applications include:

SolidWorks, Creo Pro/ENGINEER,  
Onshape, Inventor, AutoCAD, AutoCAD  
Electrical, KeyShot, Mathcad Prime,  
PDM Essentials, Windchill PLM, +more

### Course Delivery Methods

Live Instructors  
In-Center, Remote or On-Site

### Start anytime with Ve-I On-Demand

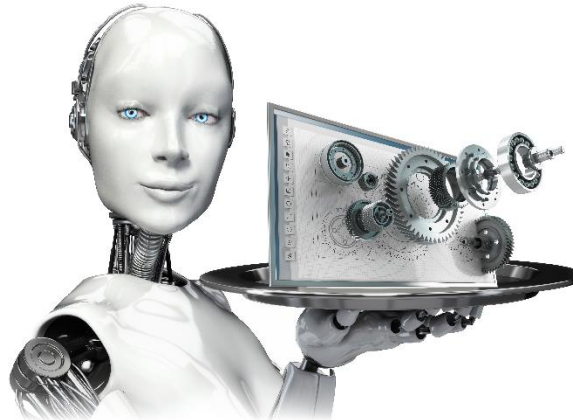
Ve-I is State of MA Section 30 Approved  
Ve-I is State of MA TAA Approved  
Ve-I is a NH Licensed Career School  
Programs are WIOA/Section 30 Eligible  
Programs are Trade Act Eligible

### We are a Veteran Friendly Institution



"GI Bill" is a registered trademark of the U.S. Department of Veterans Affairs (VA). More information about education benefits offered by the VA is available at the official U.S. government website at <http://www.benefits.va.gov/gibill>.

## Industrial Animation & Rendering Certificate Program

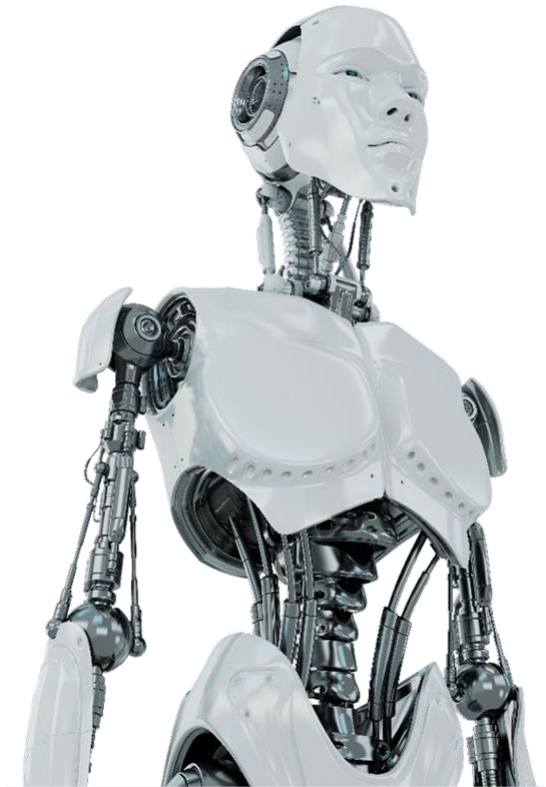


This program prepares students to learn how to create Photorealistic Renderings and Animations for Industrial & Commercial Products. Skills students will acquire include 3D Parametric Solid Modeling using industry standard 3D Mechanical Computer Aided Design (MCAD) tools. Students will learn to create and manipulate 3D models and import them into the world's leading 3D rendering software. Students will utilize their choice of SolidWorks or Creo (Formerly Pro/Engineer).



Visible Edge, Inc.  
38 Technology Way  
The Millyard Technology Park  
Nashua, New Hampshire 03060  
Telephone: (603) 595-1422  
Fax: (603) 595-5677  
Email: [sales@visible-edge.com](mailto:sales@visible-edge.com)  
Website: [www.visible-edge.com](http://www.visible-edge.com)

## Visible Edge Institute



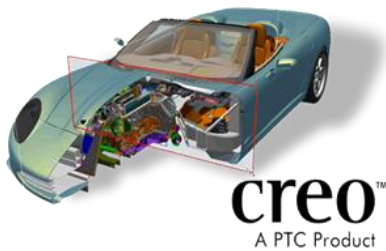
## Education & Training Services

Please ask for detailed lists of courses  
Supplemental brochures available

# Mechanical Design Applications Specialist Certificate Program



This program prepares students to be proficient 3D Parametric Solid Modelers & Detailers using industry standard 3D Mechanical Computer Aided Design (MCAD) tools. Students will learn to create 3D models and produce technically accurate drawings of mechanical parts, mechanisms and assemblies while learning industry standard drafting & modeling practices. Students will utilize their choice of SolidWorks or Creo (Formerly Pro/Engineer).



It's Your Choice!



# PDM/PLM Support Specialist Certificate Program

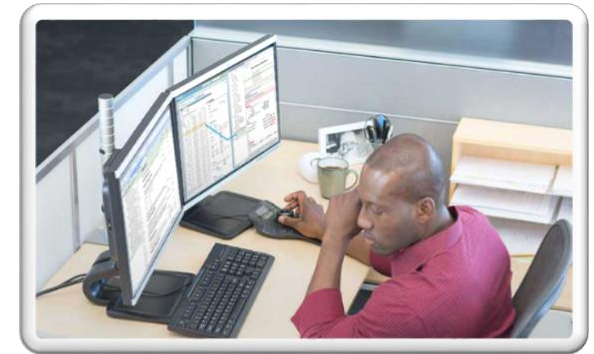


In this program, students will learn how to use and support Product Data Management (PDM) and Enterprise Product Lifecycle Management (PLM) Systems. Students will learn document control skills including how to navigate, view, create and manage information within a PDM/PLM system. Students will also learn how to manage assigned tasks, product structures and changes, create user accounts/groups and effectively plan and create information management storage strategies. Students will develop these skills using an industry standard PDM/PLM system (PTC's Windchill) used by major product development companies like DEKA, Raytheon, Lockheed, iRobot, Amphenol, BAE Systems and many other local companies. Basic MCAD training is also included.



# Project Management Applications Specialist Certificate Program

## + CAPM Certification Prep (Certified Associate in Project Management)



This program prepares students for the Certified Associate in Project Management (CAPM) Exam. Students will learn how to use and leverage PDM/PLM Systems for Project Management within a work environment. Students will learn how to navigate, view, create and manage information within a PDM/PLM system. They will also learn how to manage assigned tasks, product structures and changes, and how to effectively plan and create project management strategies. Students will develop these skills using an industry standard PDM/PLM system (PTC's Windchill) used by major product development companies like DEKA, Raytheon, Lockheed, iRobot, Amphenol, BAE Systems and many other local companies. Basic MCAD training is also included.

