

Data Management – Core Classes

(MA Program # 1106045)

Geometry Creation

Introduction to Parametric Modeling - Fundamentals
Introduction to Parametric Modeling - Productivity Tools

Using an Enterprise PLM System

Locate and View Information
Standard Document Management
Change Management

Introduction to PLM for Non-CAD Users
Information Viewers
Reviewers and Approvers
Document Editors and Authors
Manufacturing Engineers

Introduction to PLM for CAD Users
MCAD Data Management of SolidWorks Designs

Administrative Functions of Enterprise PLM

Business Administration of PLM
Data and Context Administration
User and Policy Administration
Process Administration

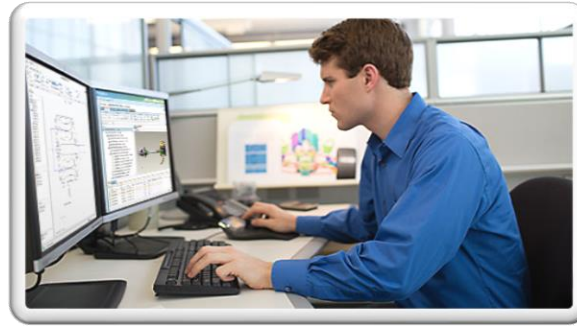
System Administration Overview of PLM
Creo Parametric Data Administration
Product Structure Management
Desktop Integration

Project Management with a PLM System

Introduction to PLM Project Management
Work Management with PLM Project Management
Locate and View Information with PLM Project Mgmt.
Standard Document Mgmt. with PLM Project Mgmt.
Project Data Management with PLM Project Mgmt.
Visualization for PLM Project Management
MCAD Data Management w/PLM Project Mgmt.
Product Structure Management with PLM Project Mgmt.

Project Work

Build & Configure a Live PDM Essentials System



**Ve-I is State of MA Section 30 & TAA Approved
Program is WIOA/Section 30/Trade Act Eligible
Ve-I is a NH Licensed Career School**

Pricing is subject to revision at any time. Ve-I reserves the right to change fees, courses, topics, policies, programs, services and personnel as required.

We are a Veteran Friendly Institution



“GI Bill® is a registered trademark of the U.S. Department of Veterans Affairs (VA). More information about education benefits offered by the VA is available at the official U.S. government website at <http://www.benefits.va.gov/gibill>.”

***Classes can be taken individually
May also include desktop application classes as needed.***

Visible Edge, Inc.
38 Technology Way
The Millyard Technology Park
Nashua, New Hampshire 03060
Telephone: (603) 595-1422
Fax: (603) 595-5677
Email: Ve-I@visible-edge.com
Website: www.visible-edge.com

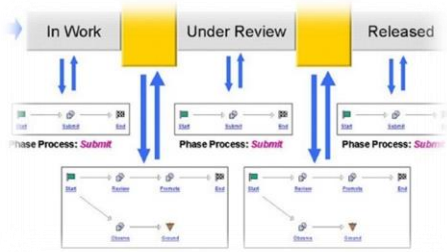
Data Management (PLM) Specialist Certificate Program



Visible Edge Institute



This program teaches students how to use and support Product Data Management (PDM) and Enterprise Product Lifecycle Management (PLM) Systems. Students will learn document control skills including how to navigate, view, create and manage information within a PDM/PLM system. You will also learn how to manage assigned tasks, product structures and changes, create user accounts/groups and effectively plan and create information management storage strategies. Students will be taught using an industry standard PDM/PLM system (PTC's Windchill) used by major product development companies like DEKA, Raytheon, Lockheed, iRobot, Amphenol, BAE Systems and many other local companies. Basic MCAD training is also included.



Data Management (PLM) Electives*

Administrative Functions of Enterprise PLM

Installing and Configuring Windows Server

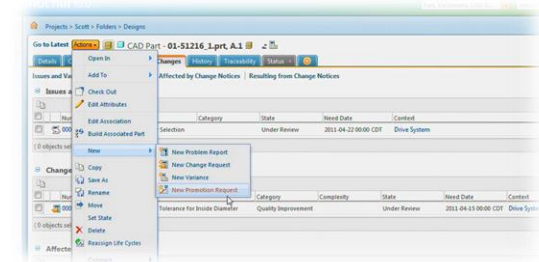
- Installation and Configuration
- Backup and Recovery
- Performance Tuning
- System Monitoring and Maintenance
- System Administration of PLM

Locate and View Information with PLM

- ECAD Data Administration

Manufacturing & Process Improvement

- Total Quality Management Certification (TQM)
- Lean Management Certification
- Six Sigma Green Belt (DMAIC)
- Lean/Six Sigma Green Belt Certification
- Lean/Six Sigma Healthcare Green Belt Certification
- Kaizen (Process Improvement methods)
- Process Improvement/TQM
- Agile /Scrum
- Visio



Using an Enterprise PLM System for:

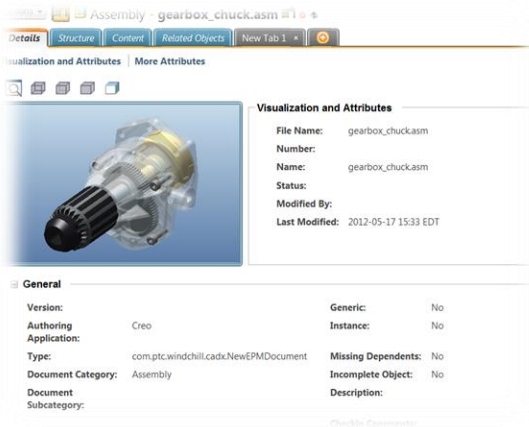
- Configuration Managers
- Engineers
- Managers

CAD Specific Workgroup Managers

- PLM for SolidWorks Users
- Creo Parametric Data Management
- PLM for Creo Parametric Users
- AutoCAD Data Management
- PLM for AutoCAD Users
- ECAD Data Management
- PLM for ECAD Users
- MCAD Data Management of CATIA Designs
- PLM for CATIA Users
- MCAD Data Management of NX Designs
- PLM for NX Users
- Creo Elements/Direct Data Management

Intro to PLM for the Implementation Team

- Managing Design Variations
- Work Management



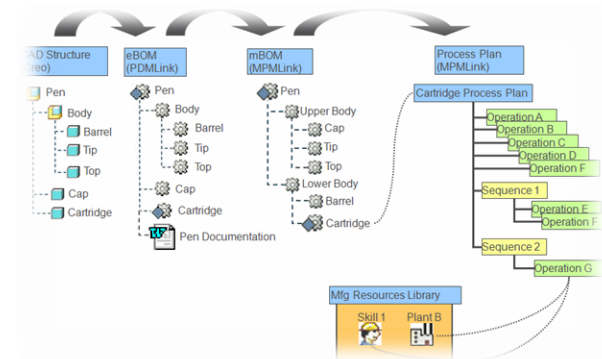
Project Management

- Project Management Fundamentals
- Microsoft Project Level 1
- Microsoft Project Level 2
- Certified Associate in Project Management (CAPM)®
- Project Mgmt. Professional (PMP)® Certification Prep
- Business Administration of PLM Project Mgmt.
- User and Policy Administration of PLM Project Mgmt.
- Data and Context Administration of PLM Project Mgmt.
- Process Administration of PLM Project Mgmt.
- PLM and PLM Project Management Interoperability

Other

- Project Work
- Introduction to PLM Manufacturing
- Introduction to Parts Classification and Reuse
- Administration of Parts Classification and Reuse
- ECAD Visualization
- Visualization Lite

Build & Configure a Live Windchill PDM/PLM System (TAA Only)



(*Additional fees may apply for some elective courses)