



# Animation & Rendering for Marketing Certificate Program



**Ve-I is State of MA Section 30 & TAA Approved  
Program is WIOA/Section 30/Trade Act Eligible  
Ve-I is a NH Licensed Career School**

Pricing is subject to revision at any time. Ve-I reserves the right to change fees, courses, topics, policies, programs, services and personnel as required.

*We are a Veteran Friendly Institution*

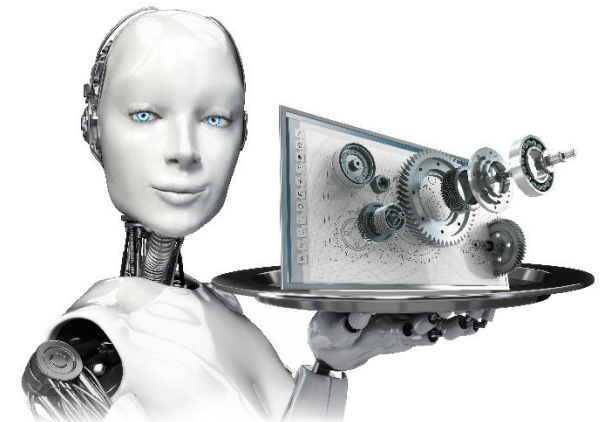


"GI Bill® is a registered trademark of the U.S. Department of Veterans Affairs (VA). More information about education benefits offered by the VA is available at the official U.S. government website at <http://www.benefits.va.gov/gibill>."

**Classes can be taken individually  
May also include desktop application classes as needed.**

Visible Edge, Inc.  
38 Technology Way  
The Millyard Technology Park  
Nashua, New Hampshire 03060  
Telephone: (603) 595-1422  
Fax: (603) 595-5677  
Email: [Ve-I@visible-edge.com](mailto:Ve-I@visible-edge.com)  
Website: [www.visible-edge.com](http://www.visible-edge.com)

## Visible Edge Institute



*This program prepares students to learn how to create Photorealistic Renderings and Animations for Industrial & Commercial Products. Skills taught will include 3D Parametric Solid Modeling using industry standard 3D Mechanical Computer Aided Design (MCAD) tools. Students will learn to create and manipulate 3D models and import them into the world's leading 3D rendering software. Students will utilize their choice of SolidWorks or Creo (Formerly Pro/Engineer).*



**Creo - Classes** (formerly Pro/ENGINEER)  
(MA Program # 1112382)

**Geometry Creation**

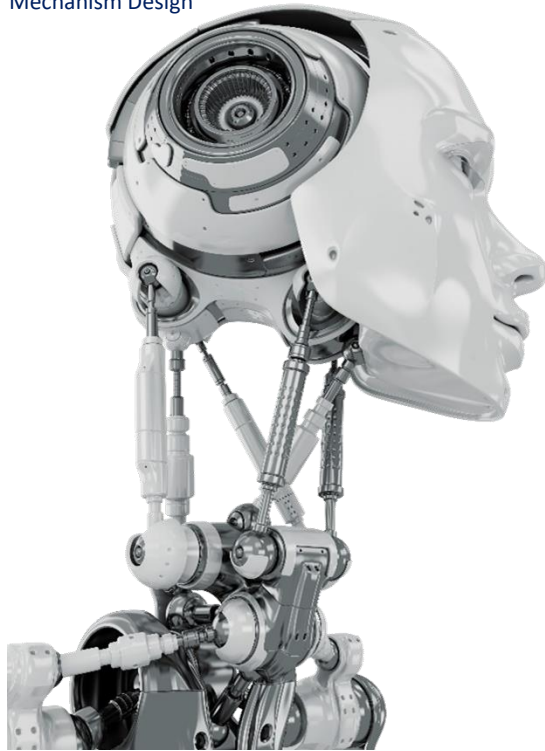
Introduction to Parametric Modeling - Fundamentals  
Introduction to Parametric Modeling - Productivity Tools  
Flexible Modeling  
Advanced Modeling\*  
Advanced Assembly Design\*  
Sheetmetal Design\*  
Introduction to PLM for CAD Users\*  
Project Work

**Industrial**

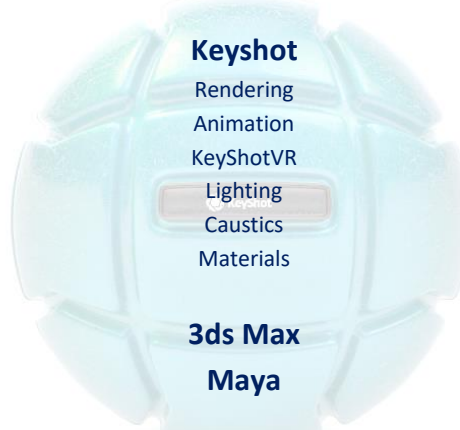
Surfacing  
Freestyle Surface Design  
Interactive Surface Design

**Simulation**

Manikin (Human Factors)  
Mechanism Design



**Animation & Rendering Electives**



+ Many more topics



**Our FOUNDATION** is in the industries we teach.  
Daily interactions with the companies that hire

**Our GOALS** are the same as yours.  
Employment of our students in industry

**Our VIEWPOINT** is focused.  
Our programs focus on employable skills

**SolidWorks - Core Classes**  
(MA Program # 1112382)

**Geometry Creation**

SolidWorks I - Introduction  
SolidWorks II - Advanced SolidWorks  
Advanced Part Modeling\*  
Advanced Assembly Modeling\*  
Sheetmetal\*  
Introduction to PLM for CAD Users\*  
Project Work

**Industrial**

Surfacing Essentials  
Advanced Surfacing Using SolidWorks

