

Creo View 3.1

Curriculum Guide



1-888-VIS-EDGE (847-3343)
sales@visible-edge.com
www.visible-edge.com

Live Classroom Curriculum Guide

- Introduction to PTC Creo View MCAD 3.1



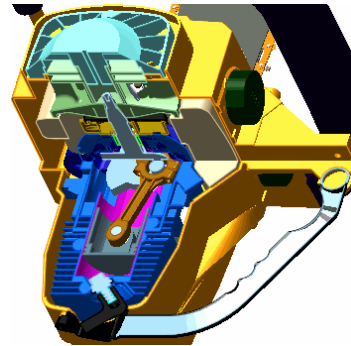
Introduction to PTC Creo View MCAD 3.1

Overview

Course Code	TRN-4760-T
Course Length	8 Hours

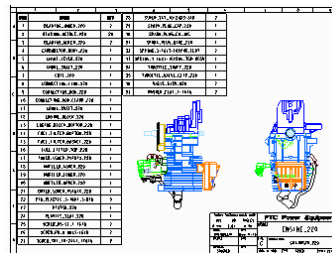
In this course, you will learn about Creo View and its role as a visualization solution for Product Data Management systems. You will learn how to visualize products and navigate through or query 3-D models, 2-D drawings, images, and documents. You will also learn how to deconstruct models to view how components fit together. In addition, you will learn how to create markups and save annotation sets to communicate design ideas and problems. Finally, you will learn how to create construction geometry.

At the end of each module, you will complete a set of review questions to reinforce critical topics from that module. At the end of the course, you will complete a course assessment in Pro/FICIENCY intended to evaluate your understanding of the course as a whole.



Course Objectives

- Introduction to visualization
- Introduction to the Creo View user interface
- Navigate and orient 3-D models
- Query data and search for model components
- Change model appearances
- Work with model annotations
- Generate a Bill of Materials
- Explode model components
- Assemble components
- Section models
- Work with components and groups
- View 2-D drawings, images, and documents
- Create markups and annotation sets
- Take measurements
- Create construction geometry



Prerequisites

- None

Audience

- This course is intended for all enterprise data users who use the Creo View MCAD client. People in related roles will also benefit from taking this course.
-

Agenda

Day 1

Module	1	Introduction to Visualization
Module	2	Getting Around in Creo View
Module	3	Viewing and Interrogating Models
Module	4	Deconstructing a Creo View Model
Module	5	Working with Components
Module	6	Viewing Drawings, Images, and Documents
Module	7	Working with Markups and Annotation Sets
Module	8	Working with Construction Geometry
