

Introduction to PTC Creo View ECAD 3.1

Overview

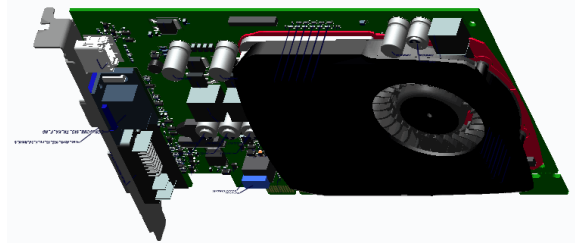
Course Code TRN-4761-T

Course Length 8 Hours

In this course, you will learn how to view and manage ECAD design viewables using Creo View ECAD 3.1. You will learn how to navigate through PCB layouts and schematics; highlight and display components and attributes; and search for components. You will also learn how to mark up Creo View ECAD viewables and save your markups as annotation sets. Finally, you will learn how to compare ECAD designs and view the differences using Creo View ECAD Validate.

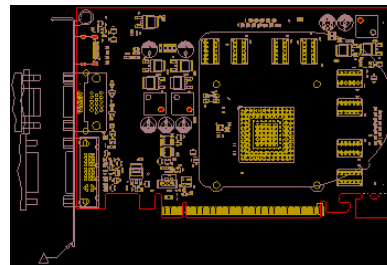
At the end of each module, you will complete a set of review questions to reinforce critical topics from that module. At the end of the course, you will complete a course assessment in PTC University Proficiency intended to evaluate your understanding of the course as a whole.

This course has been developed using PTC Creo View ECAD 3.1 F000.



Course Objectives

- Understand the Creo View ECAD user interface
- Load and view design viewables
- Search and find design components
- Manage color and visibility of design components
- View design attributes
- Cross-select between MCAD and ECAD designs
- Perform ECAD design measurements
- Add annotation objects to ECAD designs
- Compare ECAD designs using Creo View ECAD and Creo View ECAD Validate
- View design differences using Creo View ECAD



Prerequisites

- None

Audience

- This course is intended for end users who are viewing and managing ECAD designs viewables. People in related roles will also benefit from taking this course.
-

Agenda

Day 1

Module	1	Getting Around in Creo View ECAD
Module	2	Viewing and Interrogating ECAD Designs
Module	3	Working with Measurements and Annotations
Module	4	Comparing ECAD Design Viewables

Course Content

Module 1. Getting Around in Creo View ECAD

- i. Identifying Components in PTC's Visualization System
- ii. Creo View ECAD
- iii. Creo View ECAD Features
- iv. Understanding Creo View File Types
- v. Understanding the Creo View ECAD User Interface
- vi. The Viewing Area
- vii. Understanding the Ribbon
- viii. The Creo View File Menu
- ix. The Quick Access Toolbar
- x. The Primary Panel
- xi. The Upper Data Panel
- xii. The Lower Data Panel
- xiii. Starting Creo View as a Standalone Client
- xiv. Starting Creo View from Windchill
- xv. Creo View ECAD Licensing
- xvi. Setting Creo View Licensing Options
- xvii. Loading Viewables
- xviii. Adding Multiple EDA Files to the Design Package

Knowledge Check Questions

Module 2. Viewing and Interrogating ECAD Designs

- i. Visualizing and Interrogating a Creo View Design
 - ii. View Tab and Partitions
 - iii. Selection Mode Functionality
 - iv. The Crosshair Feature
 - v. Zooming ECAD Viewables
 - vi. Rotating and Flipping a PCB Layout
 - vii. Viewing Multiple Sheets in the Schematic
 - viii. Opening Schematic Hierarchical Blocks
 - ix. Types of Searches
 - x. Searching for ECAD Objects and Attributes
 - xi. Quick Search
 - xii. Finding Components
 - xiii. Design Layer Color and Visibility
 - xiv. Changing the Color and Visibility of a Layer
 - xv. Controlling the Appearance of Designs
 - xvi. Viewing ECAD Attributes
 - xvii. Viewing Attributes of Multiple Items
 - xviii. Filtering ECAD Attributes
-

- xix. Highlighting and Isolating Objects
- xx. The Highlight Feature
- xxi. The Isolate Feature
- xxii. Cross-Selection Between ECAD and MCAD
- xxiii. Cross-Select Mode
- xxiv. Objects Available for Cross-Selection

Knowledge Check Questions

Module 3. Working with Measurements and Annotations

- i. Marking Up Creo View Viewables
- ii. Adding Annotation Objects
- iii. Note and Reference Note Annotations
- iv. Leader Line Annotations
- v. Shape Annotations
- vi. Freehand Annotations
- vii. Stamp Annotations
- viii. Taking Measurements
- ix. ECAD Objects Eligible for Measurements
- x. Working with Annotation and Measurement Elements
- xi. Measuring Distance
- xii. Measuring Minimum Gap
- xiii. Measuring Conductive Path
- xiv. Taking a Measurement Summary
- xv. Creating Annotation Sets
- xvi. Saving and Retrieving Annotation Sets Using a Standalone Client
- xvii. Saving Annotation Sets to a PDM System
- xviii. Retrieving Annotation Sets from a PDM System

Knowledge Check Questions

Module 4. Comparing ECAD Design Viewables

- i. Creo View ECAD Compare and Creo View ECAD Validate
 - ii. Creo View ECAD Compare - Features
 - iii. The Creo View ECAD Compare Interface
 - iv. Input Format and EDA Files
 - v. Design Comparison Options
 - vi. Comparing Boards
 - vii. Selecting a Net Match Option
 - viii. Setting Schematic Sheet Range Options
 - ix. Comparing Layers
 - x. The Comparison Configuration Files
 - xi. Results Files
 - xii. Setting Up the Review
-

- xiii. The Creo View ECAD Validate Interface
 - xiv. Getting Transaction Details
 - xv. Working with Transactions
 - xvi. Using Advanced Filtering on Transactions
 - xvii. Adding a Transaction Note
 - xviii. Viewing Transaction History
 - xix. Communicating with External Tools
 - xx. Previewing Transactions
 - xxi. Cross-selecting Transactions
 - xxii. Status of Transactions
- Knowledge Check Questions*



Visible Edge

1-888-VIS-EDGE (847-3343)
sales@visible-edge.com
www.visible-edge.com